



## Online Courses PROSPECTUS



**Commonwealth**  
Medical eVarsity

## Table of Contents

About Commonwealth Medical Evarsity	4
About Commonwealth Medical Evarsity Pvt Ltd	5
Program details for Admissions	6
<b>Diploma in Family Medicine Fellowship in Family Medicine</b>	
Introduction	7
Objectives of the Program	8
Program Curriculum	8
Program Duration	8
<b>Fellowship in Diabetes Mellitus</b>	
Introduction	9
Objectives of the Program	9
Program Curriculum	9
Program Duration	9
<b>Fellowship in Primary Care Cardiology</b>	
Introduction	10
Objectives of the Program	10
Program Curriculum	11
Program Duration	11
<b>Fellowship in Primary Care Paediatrics</b>	
Introduction	12
Objectives of the Program	12
Program Curriculum	13
Program Duration	13

## Advanced Diploma in Hospital Management

Introduction	14
Objectives of the Program	14
Program Curriculum	15
Program Duration	15

## Certificate in Primary Care Radiology

Introduction	16
Objectives of the Program	16
Program Curriculum	16

## Certificate in Genetic Counselling

Introduction	17
Objectives of the Program	18
Program Curriculum	18
Examination Pattern	18

## Admission Procedure

Eligibility	19
Method of Payment	19
Payment Details	19
Refund Policy	19
Enrolling in a Course	20
Enrollment Process	20
Program Delivery	20
Clinical Training	20
Clinical Log Book	20

## Examination Methodology

Pattern & General rules of Assessments and Examinations	21
Criteria for Award of Diploma/Fellowship	22

DISCLAIMER	23
------------	----



## About Commonwealth Medical Evarsity

The Commonwealth Medical Association is made up of the National Medical Associations from at least 41 Commonwealth countries.

Commonwealth doctors share a common language and medical education but many are widely separated from each other geographically and they work in different environments and are exposed to different diseases. One of the main themes of the new strategic plan of the Commonwealth is 'Connecting People' and in the past the Commonwealth Medical Association (CMA) has brought doctors together under the auspices of the National Medical Associations. The CMA is now poised to deepen the interaction, knowledge, experience and voluntarism among doctors in the commonwealth as the association now strive to connect individual doctors by facilitating exchanges between doctors of different countries who visit hospitals in Commonwealth countries.

The Commonwealth Medical Evarsity is a virtual university that offers online education to medical Doctors through an interactive medium of education taking a leaf from the best practices of distance education from across the Globe. The Commonwealth Medical Evarsity is a joint educational outreach venture, promoted by Commonwealth Medical Association and Commonwealth Medical Evarsity Pvt. Ltd. that strives to bring the classroom to a Doctor's home and clinic.

## About Commonwealth Medical Evarsity Pvt Ltd

The Commonwealth Medical Association is a non governmental organisation whose main aim and objective is to assist and strengthen the capacities of National Medical Associations of countries within the Commonwealth to improve the health and wellbeing of their communities by providing technical advice and cooperation. Communicating with member associations regularly on news about developments in the field of health and cooperating with the work of the Commonwealth Health Ministers and relevant programs of the United nations. The Commonwealth Medical Association is made up of the National Medical Associations from at least 41 Commonwealth Countries.

The Commonwealth Medical Association has a mission of promoting continuous medical education among its members and wants to offer and distribute online medical courses for which they are using CMEL's services to design, develop and deliver the e-content to the prospective candidates.

The Commonwealth Medical eVarsity Pvt Ltd (CMEL) is an ICT based company focusing on medical and allied health education. The main aim of the CMEL is to provide Continuous Medical Education to Doctors across the Commonwealth Nations. CMEL extensively uses ICT to widen the scope, quality and reach of education provided to doctors on a Lifelong basis and collaborate in extending access to healthcare courses such knowledge-based, skills based and vocational, managerial and technical education courses including Continuous Medical Education(CME)/Continuous Professional Development(CPD) programs produced and developed by CMEL and distributed through the wide reach of CMA to bridge the gap between existing and felt needs of healthcare professional and the society.

### Contact Details :

Commonwealth Medical Evarsity

Telephone:

+91 984 838 8902

+91 905 217 5755

Email:

[info@commonwealthmedicalevarsity.com](mailto:info@commonwealthmedicalevarsity.com)





## Programs Details for Admissions

This prospectus can be downloaded at no cost from our website [www.commonwealthmedicalevarsity.com](http://www.commonwealthmedicalevarsity.com). All the required details are provided to enable candidates to choose and make an informed decision for enrolling, from a list of programs being offered for the academic year, Please read the Prospectus carefully before enrolling into any program.

### Programs List

Present Courses			
No.	Course	Duration	Degree
1	Diploma in Family Medicine	2 years	DFM
2	Fellowship in Family Medicine	1 year	FFM
3	Fellowship in Diabetes Mellitus	1 year	FDM
4	Fellowship in Primary Care Pediatrics	1 year	FPCP
5	Fellowship in Primary Care Cardiology	1 year	FPCC
6	Advanced Diploma in Hospital Management	1 year	ADHM
7	Certificate in Primary Care Radiology	6 months	CPCR
8	Certificate in Genetic Counselling	6 months	CGC

### Program Eligibility

- The courses are open to MBBS/MBchB/MD Doctors who are registered with Respective Medical Council of their countries.



## Diploma in Family Medicine, Fellowship in Family Medicine

### Introduction

According to American College of Family Physicians, “Family medicine is the medical specialty which provides continuing, comprehensive health care for the individual and family. It is a specialty in breadth that integrates the biological, clinical and behavioural sciences. The scope of family medicine encompasses all ages, sexes, each organ system and every disease entity”.

**World Health Organization** (WHO) defined Family medicine as that specialty of medicine which is concerned with providing comprehensive care to individuals and families and integrating biomedical, behavioural and social sciences. As an academic discipline, it includes comprehensive health care services, education and research.

The specialty of family medicine was created in 1969 to fulfill the generalist function in medicine, which suffered with the growth of sub specialization and fragmentation of personalised health care after World War II.

In the increasingly fragmented world of health care, Family physicians are dedicated to provide comprehensive health care for people of all ages — from newborns to seniors and treating the person as whole. Unlike other specialties that are limited to a particular organ or disease, family medicine integrates care for patients of both genders and all ages, and advocates for the patient in a complex health care system. Family medicine's cornerstone is an ongoing process of patient-physician relationship with the patient viewed in the context of the family and their social surrounding.

A family doctor is a physician who is a specialist trained to provide health care services for all individuals, regardless of age, sex or type of health problem. A family doctor provides primary and continuing care for entire families within their communities; addresses physical, psychological and social problems; and coordinates comprehensive health care services with other specialists as needed. Family doctors may also be known as family physicians or general practitioners, depending on the location of practice.

Dr Margaret Chan, Director-General of the World Health Organization has this to say about Family Medicine and Physicians: A health system, where primary care is the backbone and family doctors are the bedrock, delivers the best health outcomes, at the lowest cost, and with the greatest user satisfaction. She goes on to add: Primary care is our best hope for the future. Family doctors are our ‘Rising stars for the future’.

Propelled by such emphatic endorsement of concepts of Family Medicine by the American College of Family Physicians and the World Health Organization, Commonwealth Medical University is launching its flagship online course, the two-year Diploma in Family Medicine, with the combined experiences of running the course in ‘chalk and board’ distance education for nearly a decade or so and MediSys nearly for two decades into the field of virtual education.

On completion of the course, graduate doctors would become competent patient-centred clinicians - the Family Physicians, who flourish by building relationship with the patients and family, as envisioned by WHO, rather than treat them as numbers.



## Objectives of the Program

- To develop knowledge needed to diagnose and manage common acute and chronic conditions across all age groups seen in outpatient family medicine settings.
- To develop Clinical and Communication Skills to take accurate histories, perform focused physical exams, develop evidence based differentials, generate cost effective management plans, and communicate those plans effectively with patients in outpatient family medicine settings.
- To develop Skills to integrate preventive care into outpatient practice
- To develop the necessary interpersonal skills required in communicating with patients from varied of backgrounds, as well as the ability to impart appropriate health education wherever necessary.

## Program Curriculum

Semester 1	Semester 2	Semester 3	Semester 4
<b>Family Practice</b> <ul style="list-style-type: none"> <li>- Family practice management</li> <li>- Medical record keeping</li> <li>- Patient education and counseling</li> <li>- Environmental and Occupational health</li> <li>- Ethics and Medico legal issues</li> <li>- Pediatrics</li> <li>- Care of new born</li> <li>- Growth and development</li> <li>- Adoption</li> </ul>	<b>Pediatrics</b> <ul style="list-style-type: none"> <li>- Failure to thrive</li> <li>- PEM</li> <li>- Mental retardation and Speech disorders</li> </ul>	<b>Pediatrics</b> <ul style="list-style-type: none"> <li>- Acute Diarrhoea</li> <li>- Child with abdominal pain</li> <li>- Hepatomegaly</li> <li>- Child with a Heart murmur</li> </ul>	<b>Pediatrics</b> <ul style="list-style-type: none"> <li>- Anemia in child</li> <li>- UTI in children</li> <li>- Child with wheeze</li> </ul>
<b>Obstetrics and Gynecology</b> <ul style="list-style-type: none"> <li>- Pelvic Pain</li> <li>- Adnexal mass</li> <li>- PID</li> </ul>	<b>Obstetrics and Gynecology</b> <ul style="list-style-type: none"> <li>- Amenorrhea and Menorrhagia</li> <li>- Menopause and HRT</li> <li>- Normal Labour</li> <li>- Abnormal Labour</li> </ul>	<b>Obstetrics and Gynecology</b> <ul style="list-style-type: none"> <li>- Overview of Vaginitis</li> <li>- Screening for Malignancy in Female</li> <li>- Disorders of Micturition in Female</li> <li>- Cervical Cancer</li> </ul>	<b>Obstetrics and Gynecology</b> <ul style="list-style-type: none"> <li>- Infertility and management</li> <li>- Contraception</li> <li>- MTP</li> </ul>
<b>Medicine and Allied Subjects</b> <ul style="list-style-type: none"> <li>- Cardiology</li> <li>- Endocrinology</li> </ul>	<b>Medicine and Allied Subjects</b> <ul style="list-style-type: none"> <li>- Gastrointestinal System</li> <li>- Genitourinary System</li> <li>- Hematology</li> <li>- Joints/immune System</li> </ul>	<b>Medicine and Allied Subjects</b> <ul style="list-style-type: none"> <li>- Infections &amp; Infestations</li> <li>- Medical emergencies</li> <li>- Neurology</li> </ul>	<b>Medicine and Allied Subjects</b> <ul style="list-style-type: none"> <li>- Respiratory system</li> <li>- Psychiatry</li> <li>- Radiology</li> <li>- Dermatology</li> </ul>
<b>Surgery and Allied Subjects</b> <ul style="list-style-type: none"> <li>- General Surgery</li> </ul>	<b>Surgery and Allied Subjects</b> <ul style="list-style-type: none"> <li>- General surgery</li> <li>- Oto-rhino-laryngology</li> </ul>	<b>Surgery and Allied Subjects</b> <ul style="list-style-type: none"> <li>- General surgery</li> <li>- Ophthalmology</li> </ul>	<b>Surgery and Allied Subjects</b> <ul style="list-style-type: none"> <li>- General Surgery</li> <li>- Orthopedics</li> </ul>
<b>Program Duration</b>			
The duration for the Diploma Course is two years and for the Fellowship Course is one year.			





## Fellowship in Diabetes Mellitus

### Introduction

Commonwealth Medical Evarsity has launched the Fellowship program in Diabetes Mellitus to equip the doctors with the latest, clinically relevant information in the field and it will give them a detailed insight into the disease, its complications and its management.

### Objectives of the Program

The One year Fellowship in Diabetes Mellitus aims at preparing you as a generalist doctor with comprehensive up-to-date knowledge in the management of Diabetes that allows you to confidently deal with routine problems of Diabetes in your clinical practice. During the course the candidates will be trained in different aspects of the inpatient and outpatient care for diabetes. They will also be exposed to the management of various diabetes complications; through postings in the diabetic, eye, heart, foot clinics and intensive care. At the end of the Course the candidate will be fully competent to deal with any type of diabetes patient as well as with diabetes complications of any degree of severity.

After completion of the Program the student will be able to do

- Screening and diagnosis of diabetes.
- Treatment of diabetes: Oral Hypoglycemic Agents and Insulin with latest developments.
- Complications of diabetes and its management

Program Curriculum	
Semester 1	Semester 2
<ul style="list-style-type: none"> <li>- Applied Anatomy</li> <li>- Physiology and Biochemistry of Endocrine Pancreas</li> <li>- Carbohydrate Metabolism</li> <li>- Epidemiology of Diabetes</li> <li>- Pathophysiology of Diabetes</li> <li>- Classification and Types of Diabetes</li> <li>- Evaluating a Diabetic Patient</li> <li>- Investigations and Monitoring</li> <li>- Non Pharmacological Management</li> </ul>	<ul style="list-style-type: none"> <li>- Pharmacological Management</li> <li>- Diabetes Management in Elderly</li> <li>- Diabetes Management in ICU, CCU and in Surgeries</li> <li>- Diabetes in Pregnancy</li> <li>- Complications of Diabetes</li> <li>- Emergencies in Diabetes</li> </ul>
Program Duration	
The program duration for the Fellowship in Diabetes Mellitus is one year.	



## Fellowship in Primary Care Cardiology

### Introduction

One of the major changes in patient care has been a shift from sub-specialty care to primary care. Despite major progress in the development of effective therapies to reduce mortality and morbidity from cardiovascular disease, it is becoming the leading cause of mortality in the world, where heart ailments have replaced communicable diseases as the biggest killer. According to recent data, approximately 30 percent of the urban population and 15 percent of the population living in rural areas, suffer from high blood pressure and heart attacks. According to government data, the prevalence of heart failure is due to coronary heart disease, hypertension, obesity, diabetes and rheumatic heart disease, ranges from 1.3 to 4.6 million, with an annual incidence of 491,600-1.8 million.

Although effective treatments exist, there is a wide therapeutic gap between guidelines and practice. Reducing this gap has the potential to save lives. General Practitioners are at the forefront of assessment, management and follow-up of patients with cardiovascular disease. Over 50 percent of the patients suffering from a heart attack die before they reach the hospital. General Practitioners can play a very important role in saving these lives.

Commonwealth Medical Evarsity has launched the Fellowship in Primary Care Cardiology to equip such first-consult doctors, with the latest clinically-relevant information, and to mentor them in competently handling all aspects of cardiovascular disease

### Objectives of the Program

The One year Fellowship in Primary Care Cardiology aims at providing a General practitioner with comprehensive up-to-date knowledge and skills in the prevention, diagnosis and treatment of cardiovascular disease in their clinical practice.

At the end of this course, the General Practitioner will be able to provide better patient care through an increased ability to:

- Identify risk factors for development of coronary artery disease (CAD) and advise optimum primary prevention measures
- Understand various testing options and data on screening studies for CAD and how to apply this information to the management of patients at risk for CAD
- Evaluate patients with essential hypertension, malignant hypertension and secondary hypertension.
- Provide primary care and follow up of patients with various Cardiovascular diseases
- Identify congenital cardiac diseases in children, and initiate management strategies for such.
- Determine when to refer the patient to a Cardiologist/other specialist.



## Program Curriculum

- Applied Anatomy and Physiology
- Epidemiology of CVD and Preventive Cardiology
- Electro Cardiogram
- Hypertensive Disorders
- Pulmonary Embolism
- Rhythm Disorders
- Rheumatic Heart Disease
- Valvular Heart Disease
- Coronary Artery Disease
- Congenital Heart Disease
- Pediatric Cardiology
- Pericardial Disease
- Myocardial Diseases
- Vascular Diseases
- Cardiac Failure

## Program Duration

The program duration for the Fellowship in Primary Care Cardiology is one year.



## Fellowship in Primary Care Paediatrics

### Introduction

According to WHO, almost 19,000 children under five years of age are dying every day across the world. Every child has the right to survive. We can reduce the numbers of children dying from easily preventable causes. Most of the children who die each year could be saved by low cost, evidence-based, cost-effective primary care practices such as vaccines, antibiotics, micronutrient supplementation, insecticide-treated bed nets, improved family care and breastfeeding practices, and oral rehydration therapy. These low cost primary care interventions could reduce neonatal mortality by up to 70 per cent. General Practitioners have a very important role to play in reducing the neonatal mortality.

To address this important problem, Commonwealth Medical University has launched the Fellowship in Primary Care Paediatrics to equip General Practitioners with the latest clinically relevant information, and to mentor them in competently handling all aspects of paediatric disease.

### Objectives of the Program

The One year Fellowship in Primary Care Paediatrics aims at providing a General practitioner with comprehensive up-to-date knowledge and skills in the prevention and diagnosis and treatment of paediatric disease in their clinical practice.

At the end of this course, the General Practitioner will be able to provide better primary paediatric care. They will acquire the following knowledge and skills:

- Ability to integrate current information on any aspect of primary care pediatrics into general practice
- Ability to communicate effectively and empathetically with children of different ages and their families: both to get complete, accurate histories, and to explain clinical findings and treatment plans
- Ability to perform the physical examination of children – how to interpret vital signs at different ages, how the pediatric evaluation is different from the adult examination
- Ability to chart the weight, height, head circumference & BMI, and to recognize obesity or failure to thrive



- Capacity to advise mothers regarding Breast-feeding issues
- Educate families about prevention: including immunizations, safety, violence, sex, and substance use
- Use of the immunisation chart, & to know what immunizations a child needs at a given age
- Calculation of drug dosages for a child based on body weight and age
- Capability to recognize the critically ill child, and when to refer to a specialist
- Ability to Diagnose, prevent and manage common pediatric conditions

### Program Curriculum

- Growth and Development and its disorders
- Adolescence and its problems
- Fluid and Electrolyte Imbalance in Children
- Nutrition in Children
- Newborn infants
- Infections, Immunity and Immunization
- Various systemic diseases in children
- Childhood Malignancies
- Genetic Disorders
- Inborn Errors of Metabolism
- Pediatric Emergencies and Critical Care
- Pediatric Procedures
- IMNCI and Rights of Children

### Program Duration

The program duration for the Fellowship in Primary Care Paediatrics is one year.





## Advanced Diploma in Hospital Management

### Introduction

Among the top professions, Health Management occupies an eminent place. Increasing awareness in all traditional sectors associated with providing healthcare such as government and private sector and trusts has resulted in a constant effort to improve healthcare delivery in their respective domain. More so, as healthcare management is becoming increasingly a domain of the private sector, there is a growing need for skillful doctors, nurses and para-medics and, indeed, efficient hospital managers and administrators.

The medical doctors and nurses have been known for their empathy towards hospitals but the growing emergence of healthcare as a profession has drawn even those who did not have a fascination for hospitals and healthcare activities. Hospitals and healthcare providers wholeheartedly opened their doors to non-medicos who had an eye for detail and a flair for organisation for pursuing a career in Hospital Management.

Ever increasing number of private hospitals, clinics, diagnostic centres with a no-compromise emphasis on quality of health care and patient satisfaction have led to an extra ordinary need for persons with a professional qualification in Hospital Management.

Advanced Diploma in Hospital Management [ADHM] acquaints graduate and post graduate doctors with some of the core areas relating to their scope of activity in healthcare: Management Process & Organisational behaviour, Marketing, Basic Accounting, Economics, Finance, IT/HIS., Analytics, HR, Hospital Planning, Quality, OR, Epidemiology & Public Health, HOM, Laws & Ethics and Insurance.

### Objectives of the Program

The one year course leading to Advanced Diploma in Hospital Management (ADHM) aims at imparting knowledge in key areas of Hospital Management. On completion of this course, the student will be able to pursue a career in hospitals, healthcare verticals of IT companies and healthcare consultancies. They will be able to pursue further education in the field of healthcare management.



Program Curriculum	
Semester 1	Semester 2
<b>Cluster I</b> <ul style="list-style-type: none"> <li>- Management Process &amp; Organizational Behaviour</li> <li>- Healthcare Marketing</li> <li>- Basic Accounting for Healthcare Professionals</li> <li>- Health Economics</li> </ul> <b>Cluster II</b> <ul style="list-style-type: none"> <li>- Finance for Healthcare Professionals</li> <li>- Healthcare IT</li> <li>- Analytics for Healthcare Professionals [Statistics + Research Methodology + Statistical Software (Excel)]</li> </ul>	<b>Cluster I</b> <ul style="list-style-type: none"> <li>- Human Resource Management in Hospitals</li> <li>- Essentials of Hospital Planning and Administration</li> <li>- Hospital Operations Management (TQM, Six Sigma, Certifications/Accreditation)</li> <li>- Operations Research for Healthcare</li> </ul> <b>Cluster II</b> <ul style="list-style-type: none"> <li>- Epidemiology &amp; Public Health</li> <li>- Quality Management in Healthcare</li> <li>- Healthcare Laws</li> <li>- Healthcare Insurance</li> </ul>
Program Duration	
The program duration for the <b>Advanced Diploma in Hospital Management</b> is one year.	





## Certificate in Primary Care Radiology

### Introduction

General practitioners and family physicians who are the first point of medical contact are very important for the health of a community. However commercialization, corporatization, specialist reductionist approach to health and increasing patient awareness and medico legal litigations have made general practice difficult. Investigations are increasingly being ordered in defense against law suits apart from diagnostic purposes. Radiology and imaging given its intrinsic quality of being non invasive and informative and they are one of the most prescribed investigations.

In such a scenario General Practitioners should be abreast with the relevant knowledge in Radiology. Busy practitioners find it difficult to take time away from their busy schedules for this and here is where continuous online medical education comes in handy and makes such doctors' lives easy.

Recognizing this potential, Commonwealth Medical Evarsity has designed the six months certificate course in Primary Care Radiology, which imparts adequate knowledge and skills for a busy practitioner.

The course is for those who wish to develop knowledge and skills in Radiology and Imaging and for all those who wish to manage better radiology investigations in their daily practice. The course is run for six months, using a blended approach, comprising of self-paced online education, complimented by case based discussion and graded assessments.

### Objectives of the Program

The aim of the programs is to enhance the knowledge and practical skills of general physicians and family physicians. It prepares you as a clinician, with comprehensive and up-to-date knowledge in specific areas and allows you to confidently deal with patients.

The six months Certificate in Primary Care Radiology aims at imparting basic, simple and yet up-to-date knowledge in Radiology at primary care level. The course hones the skills on when to prescribe imaging investigations, how to interpret them and when to ask for a specialist radiologist opinion.

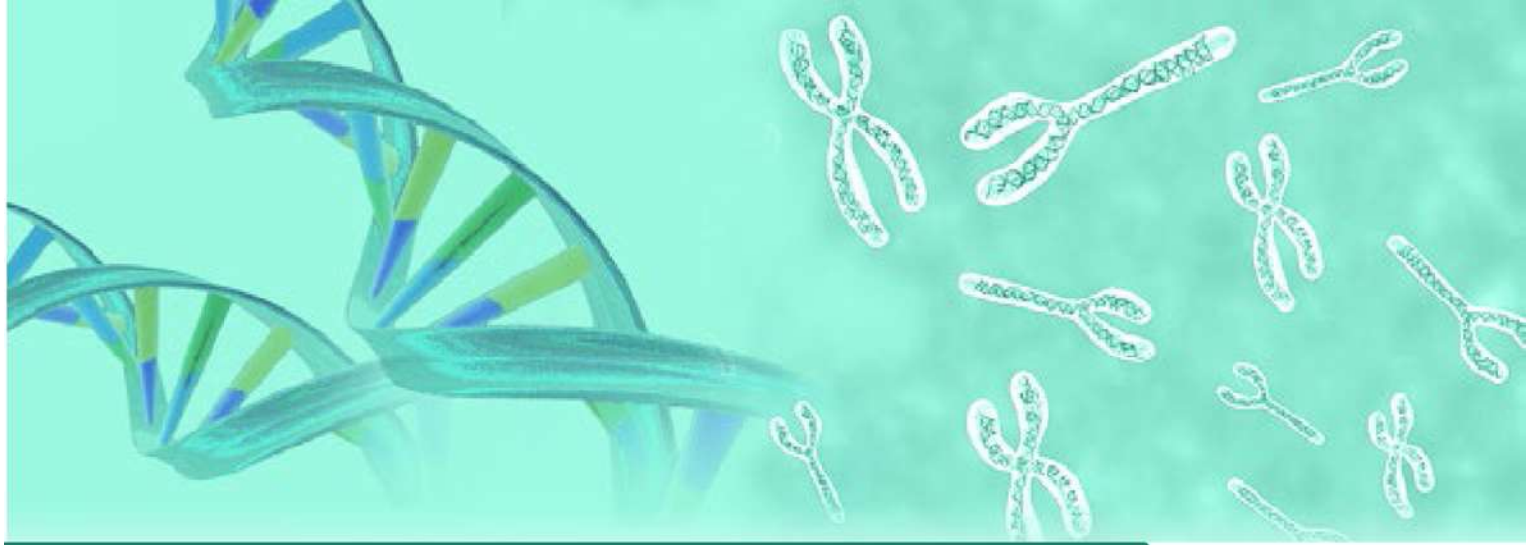
#### Program Curriculum

- Introduction to Imaging Modalities
- Image Quality Control and Optimization
- Digital Imaging and Telemedicine
- Chest and Pulmonary Imaging
- Cardiac and Mediastinal Imaging
- Musculoskeletal Patterns
- Abdominal and Urogenital Imaging
- CNS and ENT Imaging

#### Program Duration

The program duration for the Certificate in Primary Care Radiology program is six months.





## Certificate in Genetic Counselling

### Introduction

The last few decades we have witnessed an exponential growth in knowledge, catapulting genetics from obscurity to a pre-eminent place in healthcare. New information about causative genes, disease diagnosis and available treatment options for several single gene and complex genetic disorders; as well as several birth defects, are now known making disease diagnosis and treatment easier. It is critical that clinicians learn about these developments and incorporate this knowledge into their practice.

Each and every patient should be able to benefit from individualized therapy based on their unique genetic makeup; however, this can become a reality only when clinicians are able to comprehend the genetics behind the diseases and syndromes. More importantly the implications of these must be explained to the patients and relatives in a professional and compassionate manner. Such education and counseling accompanying genetic testing, is provided by Genetic Counselors in all developed countries; this kind of professional training is being taught for the first time in India for clinicians.

The National Society of Genetic Counselors (NSGC) officially defines genetic counseling as the understanding and adaptation to the medical, psychological and familial implications of genetic contributions to disease. This process integrates:

- Interpretation of family and medical histories to assess the chance of disease occurrence or recurrence.
- Education about inheritance, testing, management, prevention, resources
- Counseling to promote informed choices and adaptation to the risk or condition.

### The contemporary areas where genetic counseling is useful are:

- Congenital / birth defects - Syndromic and non-syndromic
- Mental retardation - Chromosomal and Genetic
- Male and Female Infertility, Spontaneous abortions / Bad obstetric history (BOH)
- Artificial Reproduction Techniques and Pre-implantation genetics
- Neurological disorders - Seizures, Stroke and Psychiatric disorders
- Musculo-skeletal disorders - especially Muscular dystrophies
- Metabolic disorder
- Any Familial Disorder - Eg Thalassemia
- Common adult disorders - Diabetes, Hypertension, Asthma, Cardiovascular diseases,
- Cancer genetics
- Personalized / Individualized medicine
- Stem cell banking and Regenerative Medicine
- Susceptibility to infectious diseases - TB, HPV, HIV
- Others - Deafness, Eye, Skin, Renal and Hematological disorders

## Objectives of the Program

The six months Certificate course aims at imparting Clinicians with basic knowledge in Human Genetics, Genetic basis of disease, therapy and response. On completion of this course, a clinician will not only be able to provide individuals and their families' information about diseases or problems they harbor, but also advise them of appropriate genetic tests and their consequences. They will be able to indicate the potential of gene therapy, individualized medicine and enumerate the risks of occurrence of disease to other family members, both in present and future generations. They will understand the appropriate way to communicate and divulge genetic information using sound ethical and psychological methods.

### Program Curriculum

#### Cluster 1

- Introduction To Human Genetics
- Genetics & Inheritance
- Understanding Genetics at a Molecular Level
- Psychology & Medical Ethics

#### Cluster 2

- Biochemical Basis of Genetics
- Microbiology and Genetics
- Physiology & Genetics
- Contact Program 1 (Diagnostic tests/techniques)

#### Cluster 3

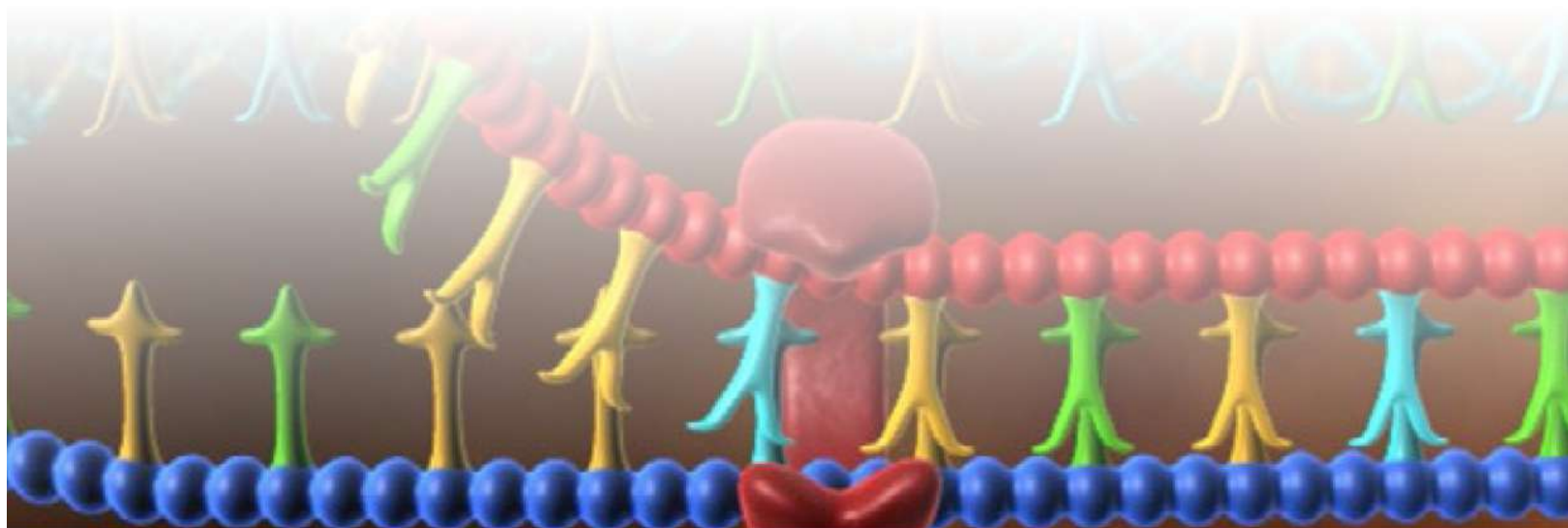
- Understanding Applications of Genetics
- Genetics & Hematology
- Cancer Genetics

#### Cluster 4

- Cyto-genetic Tests
- Advanced Molecular Techniques
- Clinical Genetics
- Mock Counseling Sessions
- Contact Program 2 (Clinical cases)

### Program Duration

The duration for the Certificate in Genetic Counseling program is six months.







## Admission Procedure

### Eligibility

The courses are open to MBBS/MBChB/MD Doctors who are registered with their respective National medical Councils.

### Fee for Courses

Please contact : [info@commonwealthmedicalevarsity.com](mailto:info@commonwealthmedicalevarsity.com)

### Method of Payment

The fee can be paid by any of the following ways:

- (i) Online Payment.
- (ii) Credit / Debit card Payment.

### Payment Details

#### You can pay by Online through SWIFT Transfer :

Bank name: ICICI Bank

Branch: Khairatabad, Hyderabad, India

Account Name: Commonwealthmedical evarsity Pvt Ltd

Account No.: 000805501116

IFSC Code : ICIC0000008

SWIFT Code : ICICINBB008

### Refund Policy

Commonwealth Medical Evarsity norms do not allow any refund once the student is enrolled. Once enrolled, the student cannot switch from one course to another or from one batch to the other. Fees once paid cannot be transferred to another candidate even if that other candidate is his own family member. For further details, please refer to the FAQs section on the Website.

## Enrolling in a Course

1. Please visit the Website: [www.commonwealthmedicalevarsity.com](http://www.commonwealthmedicalevarsity.com)
2. select the course and pay the fee.

## Enrollment Process

- The Admission cell of the Commonwealth Medical Evarsity will acknowledge the receipt of Application Form through Email with one of the following comments:
  - Application Form accepted and student enrollment is confirmed
  - Given information is not sufficient – please send the details in reply mail within 5 working days for us to close the enrollment process.
  - Your Application Form has been rejected
- If Commonwealth Medical Evarsity accepts your Application Form and enrolls you, you will receive a Welcome mail at your email address within 2 working days.

## Program Delivery

The courses have been crafted meticulously based on best practices in e-learning from across the Globe. The offers best of the models of blended education running through online lectures, with the convenience of self-study at one's own pace, time and place, complemented by online faculty interactions and clinical exposure through hospital rotations.

Commonwealth Medical Evarsity programs are delivered Online through an online learning platform. Lessons shall be delivered on a weekly basis and once the student completes the module for a particular week by viewing the lecture, completing the reading and the self-assessments student shall get access to the succeeding week's program.

## Clinical Training

The Commonwealth Medical Evarsity has a wide presence across the countries. Many eminent doctors and corporate, private and missionary hospitals extend their unflinching support to the program delivery. Students can have the clinical training in the hospitals where they are already working. The Clinical training arranged in other hospitals may require fee to be paid to that hospital. The Certificate Course in Primary Care Radiology does not have clinical training.

## Clinical Log Book

The student has to maintain a Log book during his clinical training. Every student has to maintain a Clinical Log Book containing details of the work done by him/her during the entire period of training.

*The clinical log book will include:*

- All written work such as assignments, presentations and case scenarios
- Case vignettes and learning points
- Procedures observed/ performed
- Teaching sessions attended or presented
- Personal thoughts and reflections
- Specialist interventions observed or performed

The supervisor would also offer his remarks on the training received by the students in the clinical log book.





## Examination Methodology

### Pattern & General Rules of Assessments and Examinations

Diploma, Fellowship and Certificate courses have a set pattern for formative and summative assessments/ examinations. The types of evaluations that each candidate would take, include:

- Self Assessments
- Weekend Graded Assessments [WGA]
- Semester-end Graded Exams [SGA]<sup>3</sup>: first semester-end for the 1-year courses and the first, second and the third semester-ends for the 2-year courses.
- Final End-course Graded Exams [FGA]

**Self assessments:** These are scheduled online at the end of every lecture and are neither timed nor graded. These assessments help the candidates to check how much they have grasped the lecture, to know where to re-focus, study, understand and assimilate. They are strongly advised to be taken up, but are not compulsory.

**Weekend assessments:** Each week of the course concludes with an online weekend assessment. Candidates will be questioned on all the topics covered in that week. There are a predetermined number of MCQs to be answered in a stipulated period of time. These tests are graded and once submitted cannot be re-attempted for a better score. The scores will be added together towards a Theory formative assessment total.

**Semester-end<sup>3</sup> assessments:** These are graded online assessments, MCQ-type tests, scheduled at the end of every semester. Candidates will be questioned on all the topics covered in that semester. There are a predetermined number of MCQs to be answered in a stipulated period of time. Once submitted, they cannot be reattempted for a better score. The score will carry weightage towards Formative assessment.

**Final End-course Graded Exams [FGA]:** The final exam, which is the summative assessment is also of the MCQ-type, and will be administered on-line, after completion of the Course curriculum.

### Evaluation of Practicals

**Formative evaluation:** Students have to submit e-logs of clinical cases seen. There will be bimonthly CRs, each of which can be used to log a minimum of 2 cases on-site during the posting. From the possible 6 CRs in a year, a minimum of 10 clinical Case-Logs are submissible for the 1-year Courses, and 20 Case-logs for the 2-yr Course.

**Summative evaluation for Practicals,** would consist of problem-based-learning (PBL) format of MCQs Exam, administered online, carrying 40% weightage of the total Practical score.

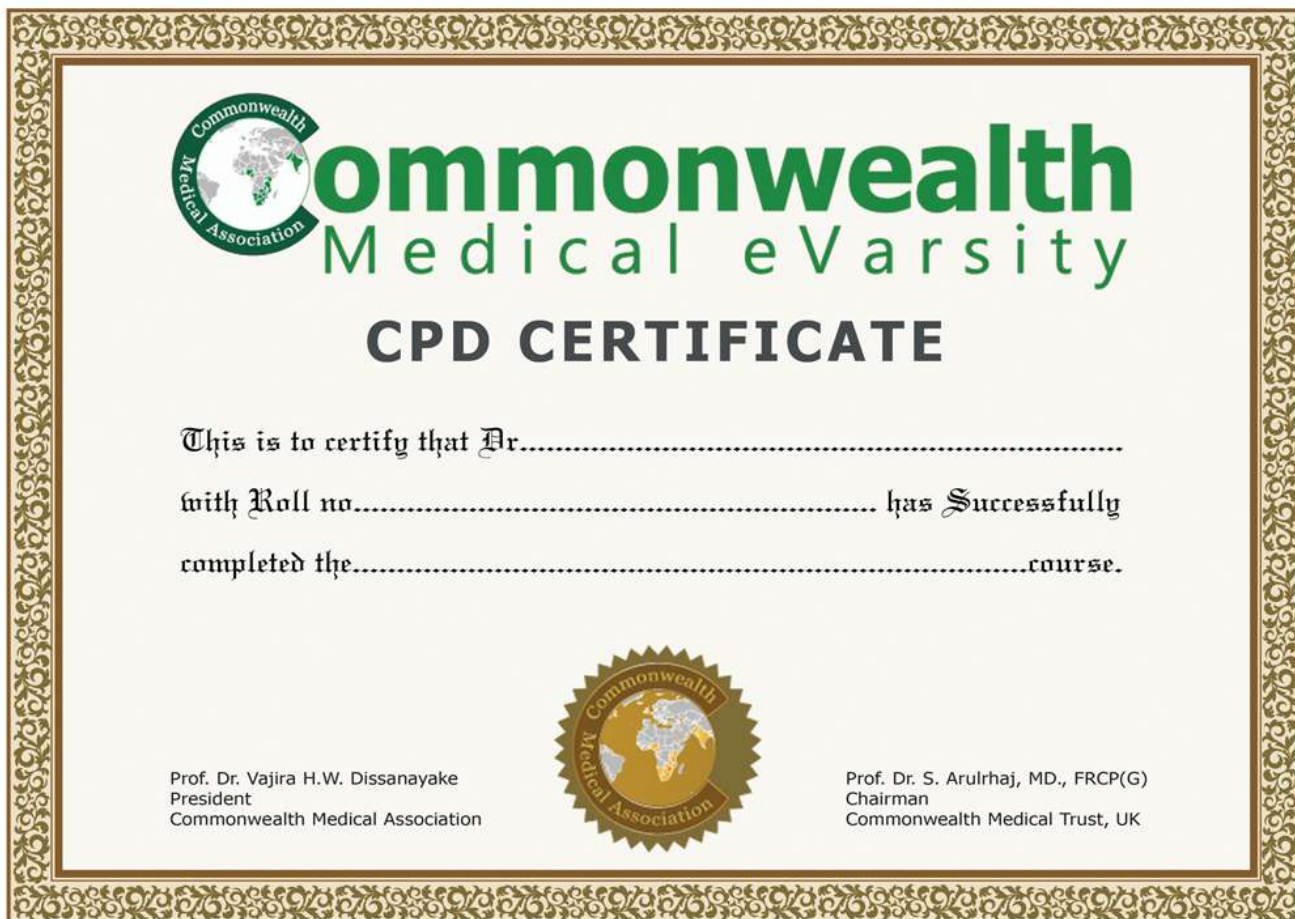
**Results:** The results will be announced online, and the student can download the results from his/her LMS account.

### Criteria for Award of Diploma/Fellowship

A candidate should satisfy the following criteria for the successful completion of the course:

- Adequate and satisfactory Log-Book completion.
- 50 % marks in Total Theory evaluation.
- 50 % marks in Total Practicals evaluation.

### Sample Certificate







## DISCLAIMER

The information provided in this Prospectus is only for the immediate use of the candidates and does not constitute a legal document. While all efforts have been made to make the information available here as authentic as possible, The Commonwealth Medical Evarsity is not responsible for any inadvertent error or inaccuracy that may have crept in.

The information provided by you is processed and the decision of the Commonwealth Medical Evarsity stands final. Any information withheld or wrongly reported by you may result in cancellation of your admission without notice

The information in the prospectus relates primarily to the session and every effort has been made to ensure it is correct at the time of the publication. The Commonwealth Medical Evarsity will use its reasonable efforts to deliver the programs as described. The prospectus is prepared in advance of the academic year to which it relates. Although reasonable steps are taken by the to provide the courses and services described, the Commonwealth Medical Evarsity cannot guarantee the provision of any course or facility.

The Commonwealth Medical Evarsity reserves the right for any reason without notice to withdraw or change any of the programs included in this prospectus, to alter tuition or exam fees, entry requirements, course content and syllabus, admission and examination policies, the facilities and/or services available from or provided by or on behalf of the Commonwealth Medical Evarsity.

The Commonwealth Medical Evarsity reserves the right to make changes to its statutes, ordinances, regulations, policies and procedures which the Commonwealth Medical Evarsity reasonably considers necessary (for example, in the light of changes in the law or the requirements of the Commonwealth Medical Evarsity's regulators); to discontinue programs of study or to combine or merge them with others.

The Commonwealth Medical Evarsity strives to keep information stored on its servers up to date, but does not guarantee the accuracy, reliability or currency of the information. Any errors in the information that are brought to our attention will be corrected as soon as possible. The Commonwealth Medical Evarsity reserves the right to change at any time without notice any information stored on the server. This includes information about courses or units of study offered by the Commonwealth Medical Evarsity. The Commonwealth Medical Evarsity accepts no responsibility or liability for the content available at the sites linked from this Website.

If you accept a place on a program, the relationship between you and the Commonwealth Medical Evarsity will be governed by the rules and regulations for students, which include the Student Agreement. The student has to follow the rules and regulations formulated by the Commonwealth Medical Evarsity and he or she is responsible for any consequences in case they fail to comply with the rules.

While the Commonwealth Medical Evarsity takes every care to send the material wherever required by courier, it shall not be responsible for the non-delivery or delayed delivery of the same either for the courier/postal lapse or because of change in the contact address of the student or for any other reason.

Prospective candidates should note that, in the event of any circumstance occurring, the Commonwealth Medical Evarsity cannot accept liability for any complaints or claims for costs, losses or damages made by a student resulting from a service disruption or closure, or any change to, or withdrawal of, a programme/module that he/she had intended to study, or the addition of a new programme.



**Commonwealth**  
Medical eVarsity

**Commonwealth Medical eVarsity**

Plot No. 1106/1, 1st Floor, Road No. 55, Jubilee Hills,  
Hyderabad - 500 033, Telangana, India

[info@commonwealthmedicalevarsity.com](mailto:info@commonwealthmedicalevarsity.com)  
[www.commonwealthmedicalevarsity.com](http://www.commonwealthmedicalevarsity.com)